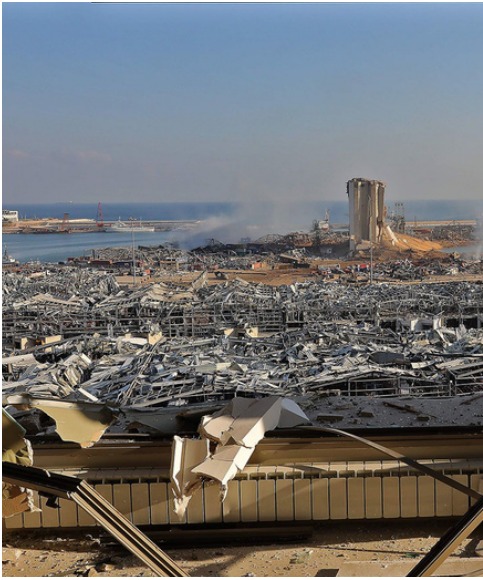


Beirut, 10th September 2020

Dear donors,



On August 4, all Lebanese suffered a terrible shock: an explosion, of a caliber that places it third in the painful ranking of world explosions, shook Beirut. The balance: more than 200 dead, 6,000 injured, 300,000 houses destroyed, 4 of the largest hospitals in the country completely demolished, more than 120 schools with notable damage, as well as numerous churches, historic houses, museums...

And above all, the specter of despair among the population: thinking that it is impossible to go ahead, that Lebanon has failed in its vocation as a country bearing the emblem of peace and knowledge of coexistence.

The Litani Cultural Center for Women, located in Achrafieh, one of the affected neighborhoods, suffered the consequences of the disastrous explosion: shattered windows, doors out of their frame, false ceiling on the floors, and displaced walls. As we picked up the rubble we wondered: what now? If the situation was already complicated enough, due to the deep economic and financial crisis aggravated by the uncertainties of COVID-19, this explosion made things almost impossible.



But in the midst of the desolation, we have immediately felt the comfort of the solidarity of so many people around the world. A solidarity that has been translated into the desire to help financially, so that the Center can stand up and resume its activities as an oasis of peace and spirit, in which so many women, mothers of families, and girls who are building their future, come to gain strength and inspiration.

Thanks to your generosity, we are not only able to begin the reconstruction phase by receiving financial support ... But also the feeling of being accompanied is giving us the encouragement we need to start over, once again, despite everything, and to spread this hope to so many people around us, in one of the most difficult moments in Lebanon's history.



We thank you, a thousand thanks, for helping us to start over.

Claude Comair
President PRODES

Litani Cultural Center for Women is a project of PRODES NGO. Is a training center for women from early school through maturity. Its objective is to support family and youth by leadership programs. It offers training courses, personal coaching, conferences and other activities directed to empower adult women and youth to face their family, professional and academic challenges and to provide them with a society service commitment.

To see our activities, you can visit our webpage: www.prodeslebanon.org