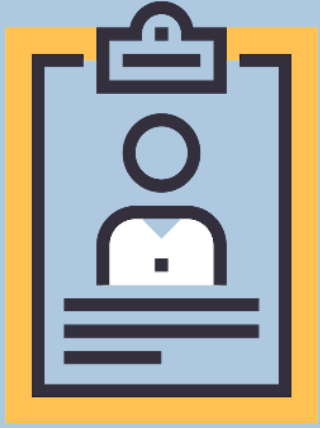


# YEAR 2018

## LEBANON MENTAL HEALTH MADAD PROJECT FIGURES



**6,335** MHPSS<sup>1</sup> CONSULTATIONS

**2,227** case management consultations

**431** psychotherapists consultations

**1,511** psychiatrist consultations

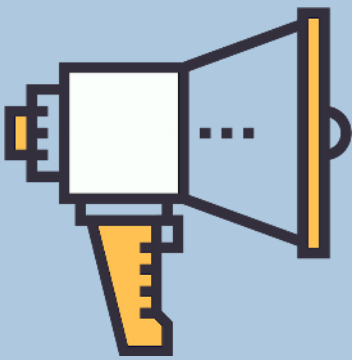
**2,166** nurses consultations



**584** BENEFICIARIES RECEIVING  
CASE MANAGEMENT  
SERVICES

**354** Syrian refugees

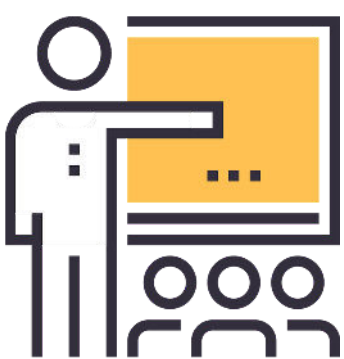
**230** Lebanese citizens and of other  
nationalities



**4,041** PARTICIPANTS IN MHPSS<sup>1</sup>  
OUTREACH AND  
AWARENESS RAISING  
SESSIONS

**4,004** Syrian refugees

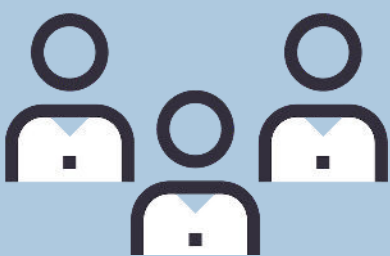
**37** Lebanese citizens and of other  
nationalities



**183** FRONT-LINE STAFF AND  
PHCC<sup>2</sup> PROVIDERS  
PARTICIPATING IN MENTAL  
HEALTH TRAININGS

**87** trained in PFA<sup>3</sup> (6 sessions)

**96** trained in Crisis Management  
Protocol (5 sessions)



**20** PARTICIPANTS IN  
COMMUNITY SUPPORT  
GROUPS

<sup>1</sup> MHPSS: MENTAL HEALTH PSYCHO-SOCIAL SUPPORT

<sup>2</sup> PHCC: PRIMARY HEALTH CARE CENTER

<sup>3</sup> PFA: PSYCHOLOGICAL FIRST AID